

clever



clever 



Flat 77 Central Park Avenue

Central, Plymouth, PL4 6NE

£45,000



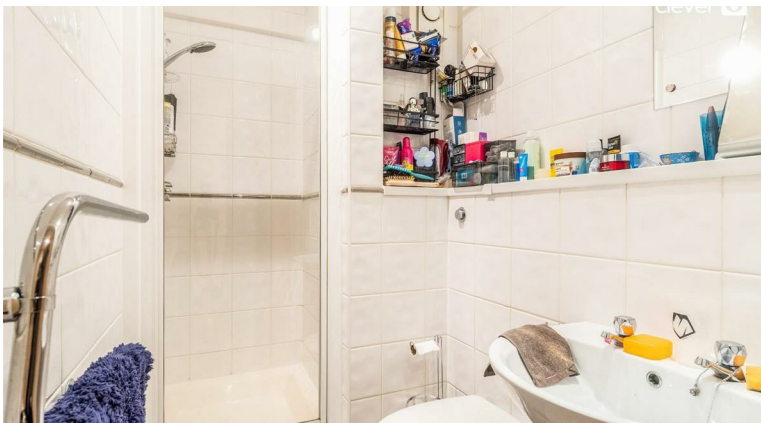
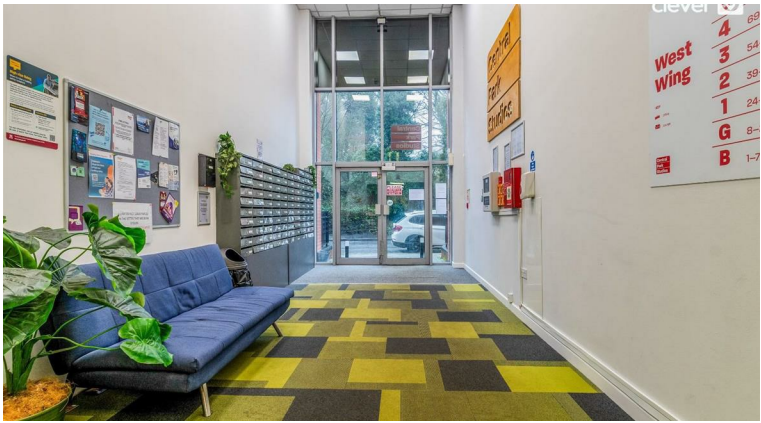
Nestled in the vibrant area of Central Park Avenue, Plymouth, this student purpose-built studio apartment presents an excellent opportunity investors. The apartment features a well-designed layout that maximises space and functionality, making it ideal for modern living.

Upon entering, you will find a welcoming reception room that seamlessly integrates with the sleeping area, creating a versatile environment perfect for relaxation and study. The apartment boasts a well-appointed bathroom, ensuring convenience and privacy.

This studio is particularly suited for student accommodation, given its proximity to local universities and amenities, making it an attractive option for those pursuing higher education. The property promises an excellent return on investment, appealing to landlords looking to expand their portfolio in a thriving area.

With its prime location, this studio apartment offers easy access to Central Park and the bustling city centre & train station, where you can enjoy a variety of shops, cafes, and recreational facilities. This property is a remarkable find in the heart of Plymouth. Don't miss the chance to make this studio apartment your own or to add it to your investment collection.





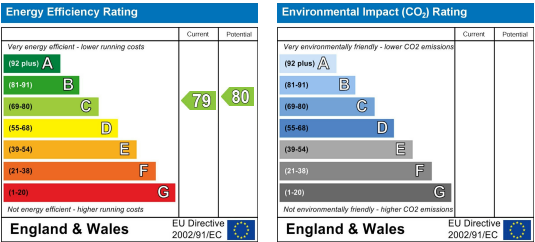
Area Map



Floor Plans



Energy Efficiency Graph



These particulars, whilst believed to be accurate are set out as a general outline only for guidance and do not constitute any part of an offer or contract. Intending purchasers should not rely on them as statements of representation of fact, but must satisfy themselves by inspection or otherwise as to their accuracy. No person in this firm's employment has the authority to make or give any representation or warranty in respect of the property.

Queen Anne Terrace, 2 Plymouth, Devon, PL4 8EG
Tel: 01752500511 Email: hello@stayclever.co.uk <https://www.stayclever.co.uk>